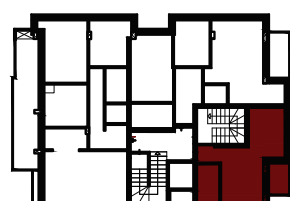
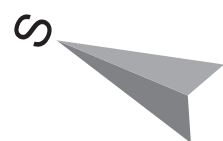


STAMBENA ZGRADA ■ Po+P+2+Pk
ulica Polgar Andraša 6v ■ Novi Sad

STAN 16 ■ Potkrovlje ■ Garsonjera

br.	Prostorija	Obrada poda	P (podna) (m ²)	P (korisna -3%) (m ²)
1	Predsooblje	ker. pločice	1,93	1,87
2	Kupatilo	ker. pločice	4,24	4,11
3	Dn. boravak	parket	11,08	10,75
4	Kuhinja + trpezarija	ker. pločice	8,27	8,02
5	Terasa	ker. pločice	2,94	2,85
UKUPNO			28,46	27,61



STAN 16 ■ Potkrovlje
Garsonjera ■ 27,61 m²