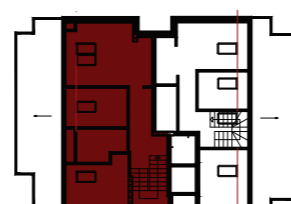
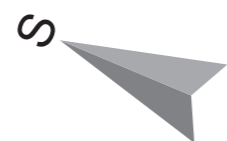


STAMBENA ZGRADA ■ Po+P+2+Pk
ulica Polgar Andraša 6v ■ Novi Sad

STAN 12 ■ Potkrovlje ■ Dupleks trosoban

br.	Prostorija	Obrada poda	P (podna) (m ²)	P (korisna -3%) (m ²)
0	Stepenište	ker. pločice	1,29	1,25
1	Predsooblje + stepenište	ker. pločice	18,01	17,47
2	Soba	parket	13,4	13
3	Kupatilo	ker. pločice	5,58	5,41
4	Soba	parket	9,44	9,16
5	Dn. boravak + trpezarija	parket	17,5	16,98
6	Kuhinja	ker. pločice	4,62	4,48
STAN 12 UKUPNO			68,55	66,49
DUPLEKS 12 UKUPNO			69,84	67,74



STAN 12 ■ Potkrovlje
Dupleks trosoban ■ 67,74 m²