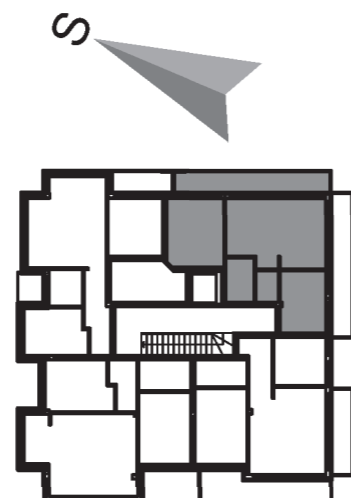


**STAMBENA ZGRADA ■ P+3+Pk-dupleks**  
**ulica Stanoja Stanojevića bb ■ Novi Sad**

**STAN 23 ■ Potkrovlje ■ Dvoiposoban**

br.	Prostorija	Obrada poda	P (podna) (m <sup>2</sup> )	P (korisna -3%) (m <sup>2</sup> )
1	Predsooblje	ker. pločice	2,11	2,05
2	Kupatilo	ker. pločice	3,83	3,72
3	Soba	parket	11,96	11,60
4	Dn. boravak i trpezarija	parket	17,49	16,97
5	Kuhinja	ker. pločice	3,02	2,93
6	Soba	parket	8,56	8,30
7	Terasa	ker. pločice	9,27	8,99
<b>UKUPNO</b>			<b>56,24</b>	<b>54,55</b>



**STAN 23 ■ Potkrovlje**  
**Dvoiposoban ■ 54,55 m<sup>2</sup>**