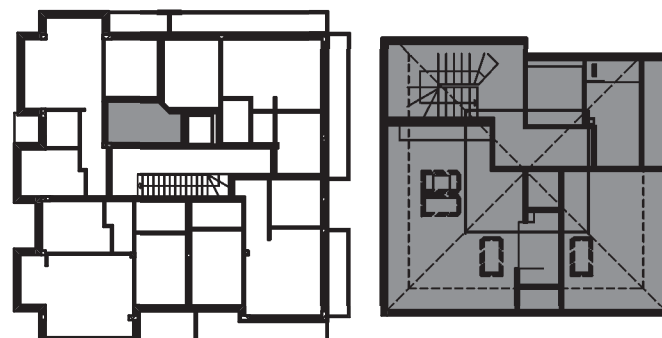
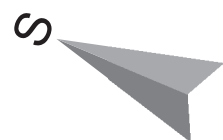


**STAMBENA ZGRADA ■ P+3+Pk-dupleks**  
**ulica Stanoja Stanojevića bb ■ Novi Sad**

**STAN 22 ■ Potkrovlje ■ Dupleks**

br.	Prostorija	Obrada poda	P (podna) (m <sup>2</sup> )	P (korisna -3%) (m <sup>2</sup> )
1	Stepenište	ker. pločice	8,99	5,09
2	Predsooblje i stepenište	ker. pločice	18,39	17,84
3	Dn. boravak i trpezarija	parket	29,74	20,91
4	Kuhinja	ker. pločice	3,65	3,54
5	Ostava	ker. pločice	1,56	1,51
6	Soba	parket	18,25	11,73
7	Kupatilo	ker. pločice	6,85	6,64
8	Garderoba	ker. pločice	4,86	4,71
<b>UKUPNO</b>			<b>92,29</b>	<b>71,98</b>



**STAN 22 ■ Potkrovlje**  
**Dupleks dvosoban ■ 71,98 m<sup>2</sup>**